
High Pressure High Efficiency Radial Ventilators

Series BYK



İNCİRCİOĞLU
VANTİLATÖR, KLİMA İMALAT SAN. VE TİC. LTD. ŞTİ.

High efficiency and economical BYK series ventilators are composed of sections that explained below. Generally BYK type ventilators are used with any kind of gas burners (diesel,Lpg,natural gas), used in places where high pressure air needed and used for other specific purposes.

BODY

BYK type ventilators have welded construction which can stand pressure, does not vibrate and seals the air inside. Standard body is made of stainless steel. Chrome-nickel or different material production is available for specific demands.

IMPELLER

Standard impeller is made of stainless steel however chrome-nickel or special composition impellers can be produced by special request. Impellers are put in to service after checking and correcting their dynamic and static balances.

MOTOR

Motors are direct drive with 3000 rpm (any requested voltage). Belt drive and elastic coupling can be used for special applications.

BASE

Base of the ventilator can be mounted to the floor by bracket connection points.

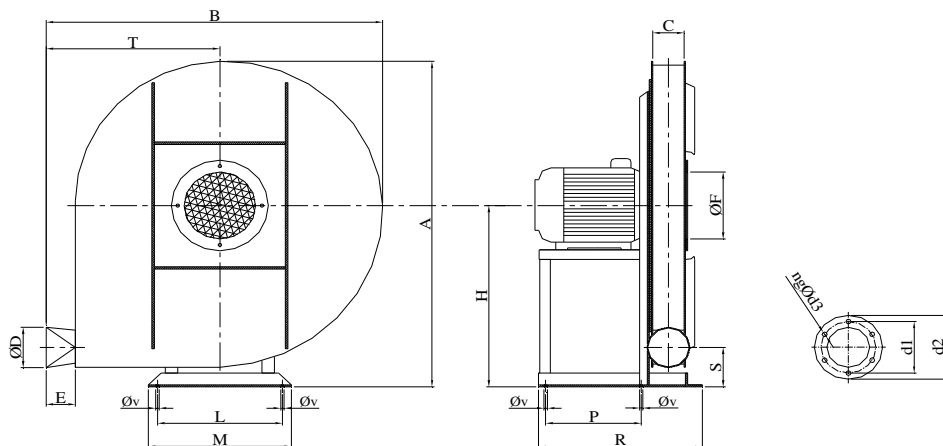
SUCTION POINT

Suction point has wire nettings to prevent large objects to be sucked in. Circle and flange suction mouth can be produced upon special demand.

OUTFLOW POINT

BYK type ventilators have standard circle outflow points. Flange outflow points can be produced upon special demand.

BYK Series High Pressure Radial Ventilators Dimension Table



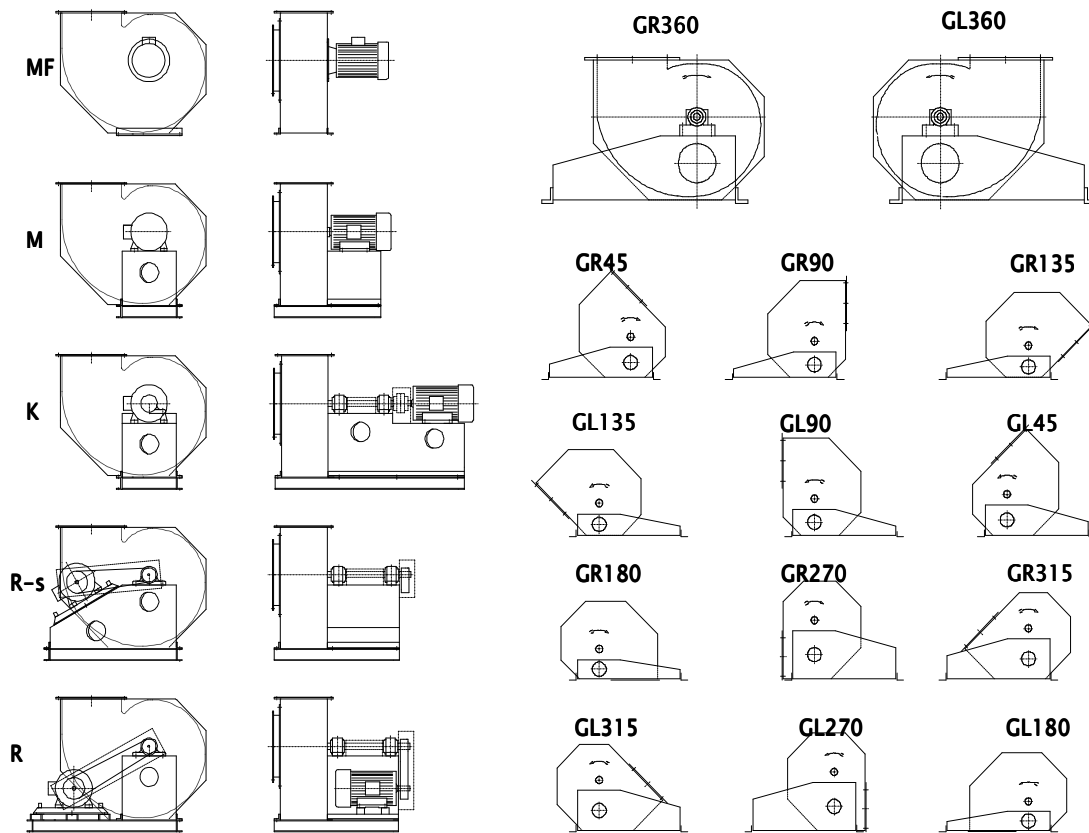
Type	Motor Power and RPM		A	B	C	ØD	E	ØF	H	L	M	P	R	S	T	Øv	Nut Dimension
	kW	rpm	mm	mm	mm	mm	mm	mm	mm	mm	mm	mm	mm	mm	mm	mm	
BYK10	0.37	2850	507	532	60	80	100	105	292	194	215	140	279	83	299	8.5	M8
BYK20	0.75	2850	557	584	60	80	100	115	316	200	227	150	288	85	324	8.5	M8
BYK30	1.1	2850	601	630	60	80	100	125	339	218	245	150	288	85	348	8.5	M8
BYK40	1.5	2850	659	680	70	90	100	135	366	240	261	175	325	88	370	8.5	M8
BYK50	2.2	2850	717	740	70	90	100	145	395	270	296	200	352	88	402	8.5	M8
BYK60	3	2850	787	798	70	90	100	155	437	285	313	210	383	98	430	10.5	M10
BYK65	3	2850	827	840	65	90	110	170	461	305	335	230	405	98	453	10.5	M10
BYK70	4	2850	827	840	75	100	110	170	461	305	335	230	405	105	453	10.5	M10
BYK75	4	2850	854	870	75	115	110	180	474	322	357	245	429	108	470	10.5	M10
BYK80	5.5	2850	854	880	85	115	120	180	474	322	357	245	429	108	480	10.5	M10
BYK90	7.5	2850	905	922	100	140	120	190	502	342	377	265	483	120	490	10.5	M10
BYK100	11	2850	1010	1010	131	180	130	180	572	440	480	410	637	168	532	10.5	M10

ØD mm	Ø d1 mm	Ø d2 mm	ng unit	Ø d3 mm	Nut Dimension
80	110	140	4	6.5	M6
90	120	150	4	6.5	M6
100	130	160	4	6.5	M6
115	145	175	6	6.5	M6
140	170	200	6	6.5	M6
180	383	240	6	6.5	M6

*The dimensions can be changed without notice.

*Direct drive type dimension table. Please contact us for other types.

Spiral housing positions and dimensions



Standard designation:

BYK a ex / R U 200 M GR360

1	2	3	4	5	6	7	8

- 1 = Type designation
- 2 = Abnormal impeller
- 3 = Ex-protection
- 4 = Construction
- 5 = Connection type
- 6 = Type
- 7 = Drive

a = Standard impeller, z.B. = Intermediate blades

R = Radial with single inlet, Z = Radial with double inlet

U = Direct tube connection (flange optional),

E = Inlet nozzle, S = Suction Box

MF Direct drive with B5 flange motor

M Direct drive with B3 motor on welded support

K Direct drive by means of an elastic coupling

KG Direct drive by means of a coupling or gearing

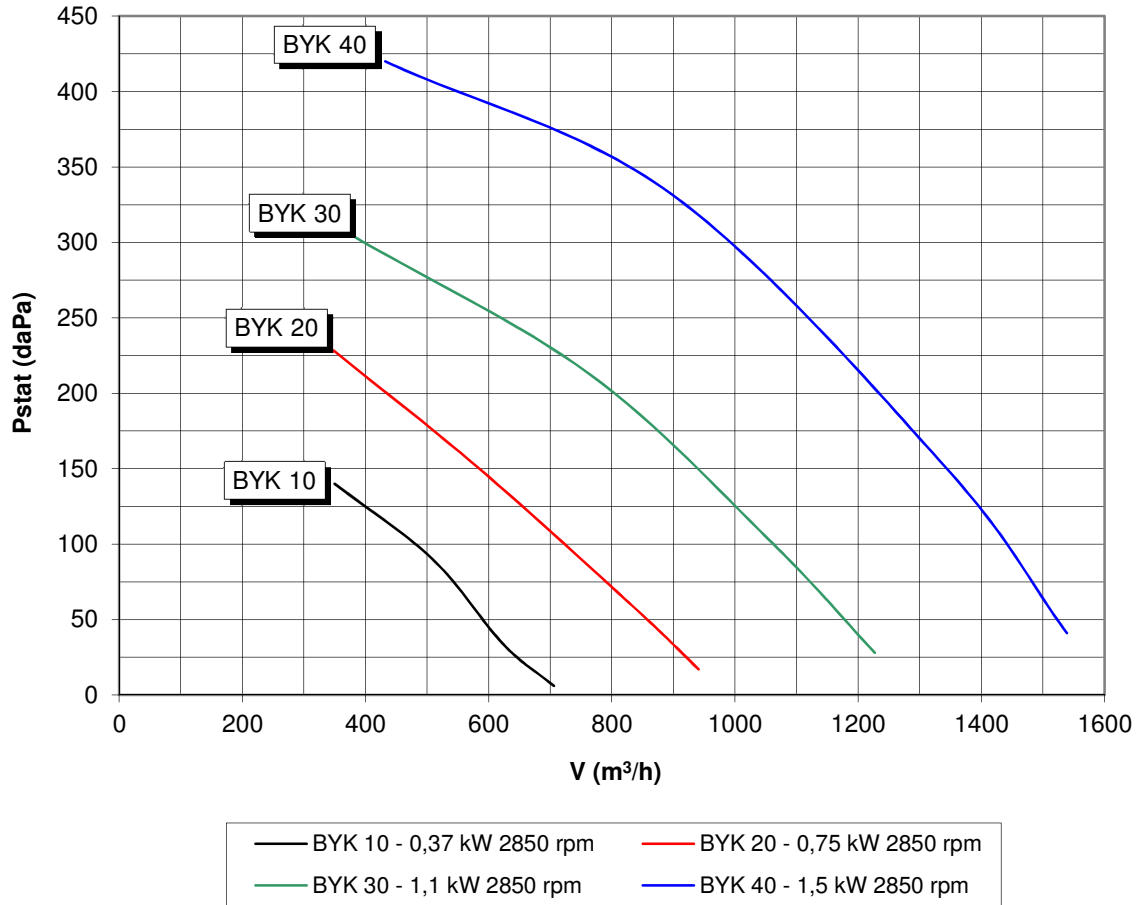
R Belt drive, motor on base frame

R-s Belt drive, motor on beveled frame

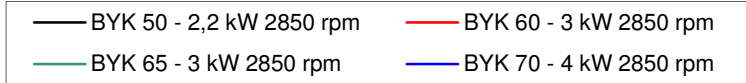
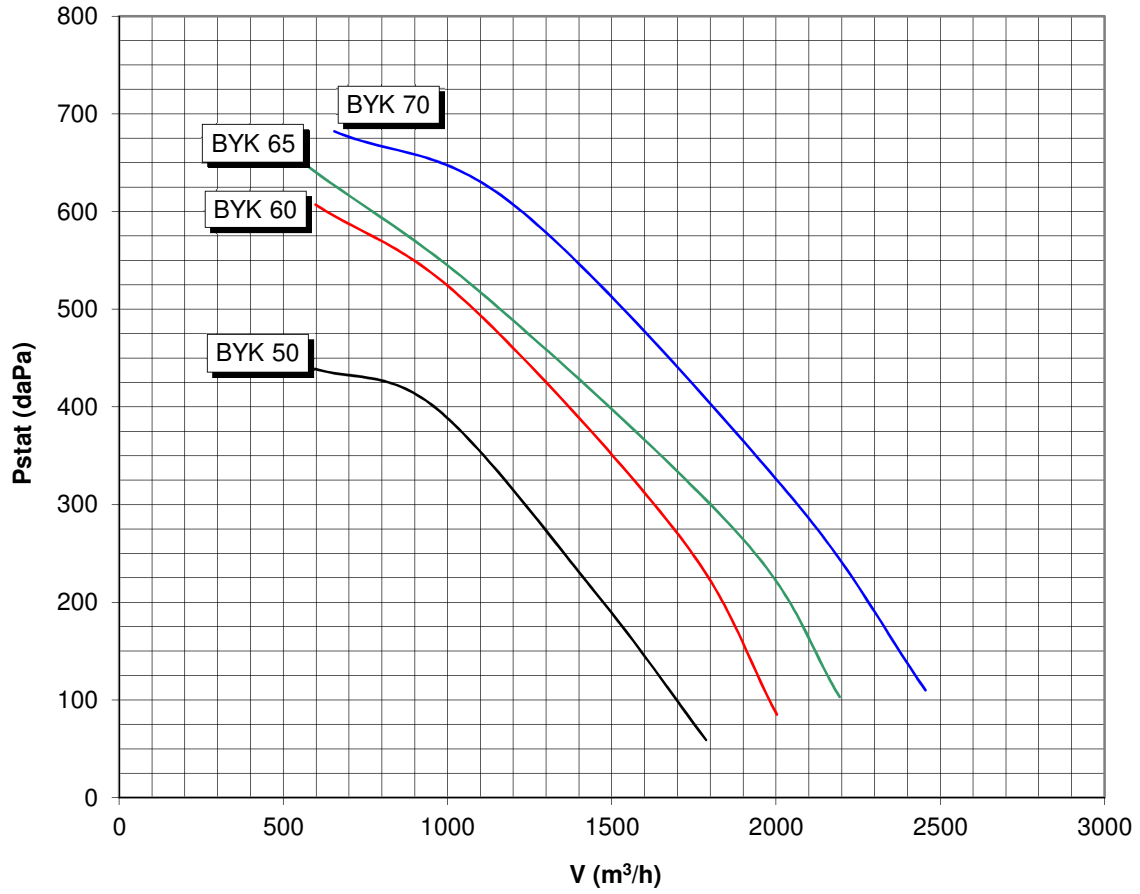
8 = Housing Position

GR = Right handed GL = Left handed

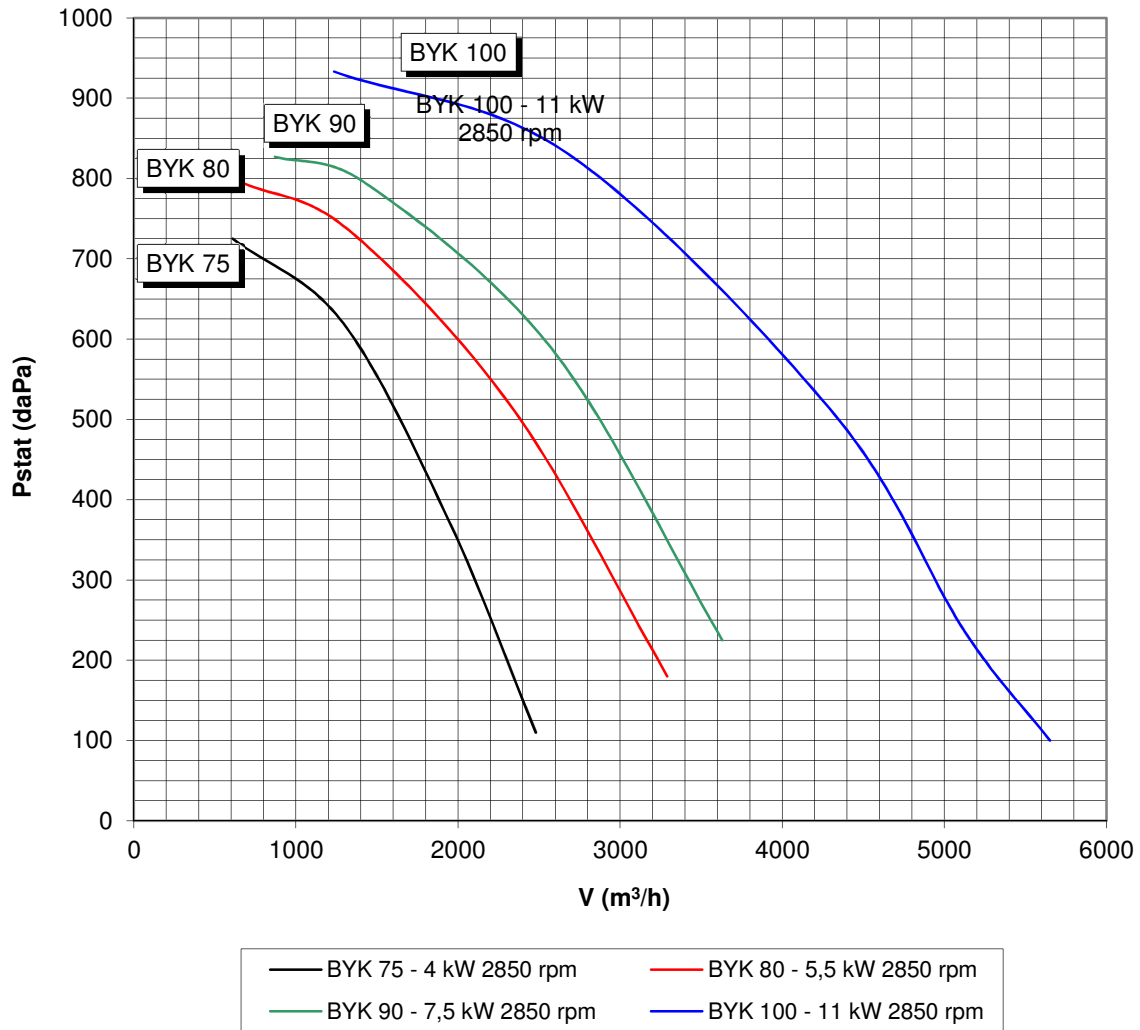
BYK 10 - 40 Performance Curves



BYK 50 - 70 Performance Curves



BYK 75 - 100 Performance Curves





Head Office : Çobançeşme Mahallesi, Sanayi Caddesi
Genç Osman Sokak, No.16
Yenibosna / İstanbul / Türkiye
☎ : (0212) 551 1112
Fax : (0212) 654 2776

Factory : Aşağı Sevindikli Köy Yolu Üzeri
Muratlı / Tekirdağ / Türkiye
☎ : (0282) 373 7088
Fax : (0282) 373 7087

www.incircioglu.com
info@incircioglu.com



ISO 9001:2008

